

VELOCITY
SOFTWARE

Performance Monitoring using zVIEW

Tim Kessler

- Enterprise View

- Layout options
- Thresholds and other configuration options
- Setting hosts

- zVIEW

- Basic layout and functions
- Configuration options
- Current data and adhoc queries
 - Graphs and reports
 - Thresholds
- Tabs
- zMAP reports
- Capacity graphs
- Views

Enterprise View

Velocity Software System Summary Demo V4 - Velocity Software - VSIVM4

First level

VSIVM1				VSIVM2				Demo System V4				VSIVM5			
VM	12:05	IFL Total (1)	0.48%	VM	12:05	IFL Total (1)	0.82%	Demo	12:05	IFL Total (2)	20.87%	VM	12:05	CP Total (1)	70.05%
Linux Nodes(Distributed Servers)				Linux Nodes(z/VM-Guests)				VSE Systems				VSE Systems			
LINUX9 (9)		2.29%		redhat6x (1)		2.08%		zvse52		28.16%		zvse52		28.16%	
suselinux3 (9)		2.22%		linux9 (9)		1.70%		zvse43		26.40%		zvse43		26.93%	
				oracle (1)		1.17%		zvse51		0.67%		zvse51		0.82%	
				redhat6 (1)		0.48%		Top 5 Linux Nodes(z/VM-Guests)				Linux Nodes(z/VM-Guests)			
				redhat62 (1)		0.47%		ills2ora (2)		6.74%		ills2ora		5.65%	
				redhat6M (1)		0.45%		lxora12b (1)		3.01%		lxora12		3.27%	
				redhat6S (1)		0.44%		redhat6x (1)		2.96%		oracle		1.17%	
				RH5X161 (1)		0.31%		redhat56 (1)		1.46%		redhat5x		0.25%	
				OSA178 (1)		0.30%		redhat6 (1)		1.16%		lxugar		0.23%	
				Linux Nodes(Distributed Servers)				Top 5 Linux Nodes(Distributed Servers)				Linux Nodes(Distributed Servers)			
				ills2ora (2)		6.38%		Remaining servers		2.19%		sles11		0.15%	
								vpnz (1)		3.32%		vpnz (1)		3.28%	
								vpnbrz (1)		2.55%		vpnbrz (1)		2.53%	
								mail (9)		2.30%		mail (9)		2.25%	
								vpnc (1)		1.46%		mail (9)		2.25%	
								vpnbc (1)		1.17%		vpnbc (1)		1.19%	
								Remaining servers		0.76%					

Second level

RKS Level 2				DXT Level 2				Tim Level 2			
VM	12:05	IFL Total (1)	0.48%	DXT2LV	14:05	IFL Total (1)	0.14%	TIM2LV	15:05	IFL Total (1)	0.26%
Linux Nodes(z/VM-Guests)				Linux Nodes(z/VM-Guests)				Top 5 Linux Nodes(z/VM-Guests)			
linux001		0.22%		redhat56 (1)		1.44%		ills2ora (2)		5.68%	
				redhat6 (1)		0.45%		lxora12b (1)		3.29%	
				redhat5x (1)		0.26%		redhat56 (1)		1.37%	
				lxugar (2)		0.23%		redhat6 (1)		0.46%	
				redhat64 (1)		0.15%		redhat5x (1)		0.30%	
								Remaining servers		0.82%	
								Top 5 Linux Nodes(Distributed Servers)			
								vpnbrz (1)		2.61%	
								vpnbc (1)		1.15%	
								rhel7v (2)		0.76%	

- Quick overview of all LPARs
 - Operations or system support
- Total and individual processor CPU utilization
- Linux servers
 - Local and Distributed
 - Number of processors
 - Swap rate and used – click on + to expand
- VSE guests
- Other users
- URL: <http://hostname/ZVIEW>

Layout options

- Use VSIMAIN Config option
 - Not all options show if direct XEDIT file
 - F10 on product line
 - Fast path command: VSIMAIN CONFIG ZVIEW *configfn configft*
 - F1 on parameter for help or anywhere else for all parameter help
- Configuration file: ZVIEW CECLIST

Enterprise View

CECUTIL

Velocity Software Inc.
ZVIEW CECLIST Configuration

ZVIEW PROD4240

System Overview Parameters

Web page title Velocity Software System Summary Demo V4
Number of graphs across 4
Maximum local Linux guests 5
Maximum distributed Linux guests 5
Maximum users 5
CPU count source USERDATA
Server click URL /zview/zview.cgi
Server click parms graph=NODEUTTM&parm=&server
User click URL /zview/zview.cgi
User click parms graph=USERCPU&parm=&server

Thresholds

Threshold TOTALCPU	Warning	70	Value	90
Threshold CPU	Warning	70	Value	90
Threshold SERVERCPU	Warning	70	Value	90
Threshold SWAPRATE	Warning	3	Value	10
Threshold SWAPUSED	Warning	90	Value	95

Group names listed in display order

Group name First level
Group name Second level

System name VM1
System URL HTTP://WWW.VELOCITYSOFTWARE.COM/ZVIEW/
System heading VSIVM1
System group First level

System name VM2
System URL HTTP://VSIVM2.VELOCITYSOFTWARE.COM/ZVIEW/
System heading VSIVM2
System group First level

PF1: Help PF2: Validate/Save PF3: Exit PF5: Add line PF6: Delete line
PF8: Down PF10: Default PF12: Cancel



System Overview Parameters

- Title
- Number of columns
- Number of Linux servers (local & distributed) & users
 - *, 0 or number
- Where to get number of processors for Linux servers
 - Some older versions of NetSNMP return incorrect values
 - *CPU count source* USERDATA recommended for local servers
- Linux and user name click specification
 - Specify zVIEW graph or report or some other URL

Thresholds

- Total CPU, individual CPU, server CPU, swap rate and swap used
- Warning (yellow) and Value (red)
- Set value for swap rate or swap used to enable
- Triggered threshold
 - Color title and line
 - Automatically expand CPUs or swap
 - Focus on first threshold

- **Groups and LPARs**
 - Groups can be defined to group LPARs by CEC or location
 - Set names, heading, URL and group
 - Also used by zVIEW to define available hosts
 - Match URL to what user would enter in browser
 - IP address or host name
 - http or https
- **Expand button**
 - Expand LPAR data for easier viewing
 - Will stay expanded across refreshes



Enterprise Performance Summary

DC1

V1P1 Expand		V1P2 Expand		V1P3 Expand		V1P4 Expand	
V1P1	07:12 IFL Total (20) 185.30%	V1P2	07:12 IFL Total (20) 184.02%	V1P3	07:12 IFL Total (20) 668.29%	V1P4	07:12 IFL Total (19) 433.28%
Linux Nodes (zVM-Guests)		Linux Nodes (zVM-Guests)		Linux Nodes (zVM-Guests)		Linux Nodes (zVM-Guests)	
V1N1 Expand		V1N2 Expand		P105 Expand		P106 Expand	
V1N1	07:12 IFL Total (8) 265.41%	V1N2	07:12 IFL Total (8) 7.91%	P105	07:12 IFL Total (20) 13.22%	P106	07:12 IFL Total (20) 12.99%
Linux Nodes (zVM-Guests)		Linux Nodes (zVM-Guests)		Linux Nodes (zVM-Guests)		Linux Nodes (zVM-Guests)	
P107 Expand		P108 Expand		P109 Expand		P110 Expand	
P107	07:12 IFL Total (14) 7.56%	P108	07:12 IFL Total (14) 8.56%	P109	07:12 IFL Total (8) 1.49%	P110	07:12 IFL Total (8) 1.53%
Linux Nodes (zVM-Guests)		Linux Nodes (zVM-Guests)					
P113 Expand		P114 Expand					
P113	07:12 IFL Total (14) 2.56%	P114	07:12 IFL Total (14) 4.88%				
Linux Nodes (zVM-Guests)		Linux Nodes (zVM-Guests)					

DC2

V2P1 Expand		V2P2 Expand		V2P3 Expand		V2P4 Expand	
V2P1	07:12 IFL Total (32) 482.74%	V2P2	07:12 IFL Total (32) 825.66%	V2P3	3E0FC7-21 86.95%	V2P4	07:12 IFL Total (32) 312.03%
Linux Nodes (zVM-Guests)		Linux Nodes (zVM-Guests)		3E0FC7-22 15.24%		Linux Nodes (zVM-Guests)	
V2P5 Expand		V2P6 Expand		P207 Expand		P208 Expand	
V2P5	07:12 IFL Total (20) 340.64%	V2P6	07:12 IFL Total (20) 348.75%	P207	07:12 IFL Total (24) 585.87%	P208	07:12 IFL Total (24) 485.11%
Linux Nodes (zVM-Guests)		Linux Nodes (zVM-Guests)		Linux Nodes (zVM-Guests)		Linux Nodes (zVM-Guests)	
P209 Expand		P210 Expand		P211 Expand		P212 Expand	
P209	07:12 IFL Total (32) 884.2%	P210	07:12 IFL Total (32) 836.33%	P211	07:12 IFL Total (32) 1032.18%	P212	07:12 IFL Total (28) 685.29%
Linux Nodes (zVM-Guests)		Linux Nodes (zVM-Guests)		Linux Nodes (zVM-Guests)		Linux Nodes (zVM-Guests)	
P213 Expand		P214 Expand		P215 Expand		P216 Expand	
P213	333B77-19 71.94%	P214	07:12 IFL Total (28) 439.01%	P215	07:12 IFL Total (24) 380.90%	P216	07:12 IFL Total (24) 348.65%
	333B77-20 9.94%	Linux Nodes (zVM-Guests)		Linux Nodes (zVM-Guests)		Linux Nodes (zVM-Guests)	
P217 Expand		P218 Expand		P219 Expand		P220 Expand	
P217	07:12 IFL Total (20) 2.64%	P218	07:12 IFL Total (20) 4.46%	P219		P220	07:12 IFL Total (24) 1.15%
Linux Nodes (zVM-Guests)		Linux Nodes (zVM-Guests)					
C203 Expand		C204 Expand		C205 Expand		C206 Expand	
C203	07:12 IFL Total (16) 487.52%	C204	07:12 IFL Total (10) 290.24%	C205	07:12 IFL Total (10) 791.06%	C206	07:12 IFL Total (10) 636.96%
Linux Nodes (zVM-Guests)		Linux Nodes (zVM-Guests)		3520D7-0 80.10%		Linux Nodes (zVM-Guests)	
C207 Expand		C208 Expand		V2N1 Expand		V2N2 Expand	
C207	07:12 IFL Total (12) 92.29%	C208	07:12 IFL Total (12) 1.33%	V2N1	07:12 IFL Total (10) 268.45%	V2N2	07:12 IFL Total (28) 62.95%
Linux Nodes (zVM-Guests)		Linux Nodes (zVM-Guests)		Linux Nodes (zVM-Guests)		Linux Nodes (zVM-Guests)	
V2N3 Expand		V2C1 Expand		V2C2 Expand			
V2N3	07:12 IFL Total (12) 1.22%	V2C1	07:12 IFL Total (16) 656.29%	V2C2	07:12 IFL Total (12) 617.71%		
		Linux Nodes (zVM-Guests)		Linux Nodes (zVM-Guests)			

CDL

VLB1 Expand		VLB2 Expand		VLB3 Expand		VLB4 Expand	
VLB1	07:12 IFL Total (20) 616.85%	VLB2	07:12 IFL Total (12) 1158.17%	VLB3	07:12 IFL Total (20) 301.97%	VLB4	07:12 IFL Total (14) 847.53%
Linux Nodes (zVM-Guests)		02CA7-0 83.38%		Linux Nodes (zVM-Guests)		Linux Nodes (zVM-Guests)	
VLB5 Expand		VLB6 Expand		VLB8 Expand		ZS01 Expand	
VLB5	07:12 IFL Total (20) 0.44%	VLB6	061A67-6 81.30%	VLB8	07:12 IFL Total (20) 159.02%	ZS01	07:12 IFL Total (2) 1.01%
		061A67-7 69.33%		Linux Nodes (zVM-Guests)			

URL: <http://hostname/ZVIEW/ZVIEW.CGI>

DEMO - zVIEW - Google Chrome
 demo.velocitysoftware.com/ZVIEW/zview.cgi
 Today is Monday 13 Jun 2016 zVIEW Version 4240

VELOCITY SOFTWARE
 zVIEW - Velocity Software - VSIVM4 (DEMO)
 Performance Displays for zVM and Linux on System z

SYSTEM

ESAMAIN - System Overview - DEMO

Time	Users	Transact.	Processor	Cap	Storage (MB)	...
	On	In Q	Utilization	ture	Fixed Active Stor	...
	Actv	Sec.	CPUS	Total	Ratio	User Resid. Load XStor
10:04:00	92	58 20.0	19.9 0.31	2 22.3	19.3	100 47 12689 0.4
10:03:00	92	54 34.0	19.2 0.41	2 22.1	19.1	100 47 12676 0.4
10:02:00	92	51 25.0	18.6 0.52	2 23.0	19.8	100 47 12662 0.4
10:01:00	92	46 25.0	19.4 0.43	2 28.0	24.4	100 47 12639 0.4
10:00:00	92	61 25.0	20.6 0.31	2 19.9	17.1	100 47 12693 0.4
09:59:00	92	44 18.0	20.1 0.38	2 19.7	17.0	100 47 12636 0.4
09:58:00	92	51 20.0	18.5 0.54	2 18.8	15.9	100 47 12661 0.4
09:57:00	92	50 22.0	17.3 0.71	2 20.2	17.3	100 47 12652 0.4
09:56:00	92	49 28.0	18.9 0.35	2 72.5	69.9	100 47 12650 0.4
09:55:00	92	61 18.0	20.0 0.29	2 22.4	19.6	100 47 12693 0.4
09:54:00	92	44 14.0	20.5 0.27	2 20.6	17.9	100 46 12636 0.4
09:53:00	92	46 18.0	20.4 0.28	2 21.5	18.7	100 46 12642 0.4
09:52:00	92	54 13.0	20.8 0.28	2 25.8	21.4	100 47 12663 0.4
09:51:00	92	48 18.0	20.8 0.28	2 23.9	20.9	100 47 12649 0.4
09:50:00	92	61 18.0	20.7 0.27	2 19.2	16.0	100 47 12693 0.4
09:49:00	92	45 15.0	21.1 0.28	2 19.8	16.7	100 47 12639 0.4
09:48:00	92	48 21.0	21.2 0.29	2 20.3	17.1	100 47 12647 0.4

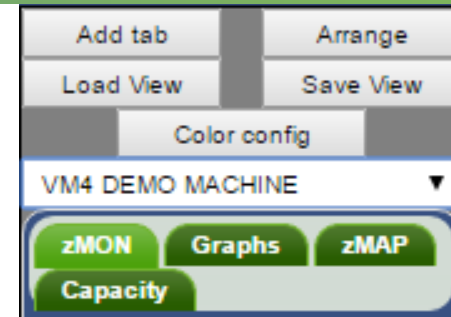
CPU Utilization - DEMO

DASD I/O Rate - DEMO

LPAR Shared CP Utilization - DEMO

LPAR Shared IFL Utilization - DEMO

User Class Utilization - DEMO



Add tab

- New tab to organize new graphs and reports

Arrange

- Up to 12 graph/reports

Load/Save View

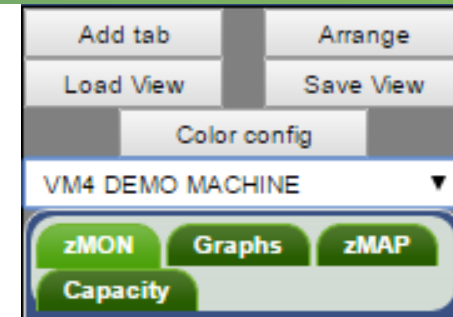
- Load or save from system, cookie or local disk

LPAR

- Drop down box for LPARs defined in ZVIEW CECLIST
- LPAR to obtain data from

Color config

- Color wheel to define series colors
- Specific color for LPAR, server or user
- Alternate name for LPAR, server or user on graphs



ZMON & Graphs

- Realtime or adhoc reports or graphs

ZMAP

- Daily, weekly or monthly ZMAP reports

Capacity

- Daily, weekly, monthly or trending graphs
- Created with RUNCHART utility

Configuration

```

ZVIEWCFG                               Velocity Software Inc.           ZVIEW PROD4240
                                CONFIG ZVIEW Configuration

Startup view SYSTEM      Load startup view when change host NO
Header title Performance Displays for zVM and Linux on System z
Floating main menu        YES
zMap page group count    100
Host code page           1047
Debug                    NO

Graph options
Graph name _____ Threshold warn _____ Value _____ Type _____

Excluded zMON screens _____ Exclude from Index NO

Default series colors for graphs #4bb2c5 #EAA228 #c5b47f #579575 #953579
#839557 #4b5de4 #958c12 #ff5800 #d8b83f #0085cc #c747a3 #cddf54 #FBD178
#26B4E3 #bd70c7 #2020E0 #00FFFF #FF00FF #00FF00 #800000 #ffc0cb #000080
#808000 #800080 #8A2BE2 #008080 #4B0082 #808080 #281415 _____

Colors for specific servers/classes
Server/class: Name _____ Color _____
                Alternate name _____

PF1: Help      PF2: Validate/Save  PF3: Exit      PF5: Add line   PF6: Delete line
                PF8: Down                PF10: Default  PF12: Cancel

```

- Startup view
 - Start up view or NONE and on host change
- Title
- Floating menu
- zMAP page group count
 - Can affect response time and web server storage
- Host code page
 - May need to change webserver DEFAULT_CHARSET ISO-8859-1
- Debug

- Graph options
 - Graph names from graph Preferences, About
 - Default threshold values
 - Default graph type
 - Vertical and horizontal bar and stacked bar
 - Area and stacked area
 - Line
 - Table
 - Pie and pie percentage
- Excluded ZMON screens
 - Excluded from screen index

- Series colors
 - Easier specified with Color config button
- Alternate server/class names

zVIEW - Set graph colors ✕

Default Series Colors

Color 1: ✕ #4bb2c5	Color 2: ✕ #EAA228	Color 3: ✕ #c5b47f	Color 4: ✕ #579575	Color 5: ✕ #953579	Color 6: ✕ #839557	Color 7: ✕ #4b5de4	Color 8: ✕ #958c12
Color 9: ✕ #f5800	Color 10: ✕ #d8b83f	Color 11: ✕ #0085cc	Color 12: ✕ #c747a3	Color 13: ✕ #cddf54	Color 14: ✕ #FBD178	Color 15: ✕ #26B4E3	Color 16: ✕ #bd70c7
Color 17: ✕ #2020E0	Color 18: ✕ #00FFFF	Color 19: ✕ #FF00FF	Color 20: ✕ #00FF00	Color 21: ✕ #800000	Color 22: ✕ #ffc0cb	Color 23: ✕ #000080	Color 24: ✕ #808000
Color 25: ✕ #800080	Color 26: ✕ #8A2BE2	Color 27: ✕ #008080	Color 28: ✕ #4B0082	Color 29: ✕ #808080	Color 30: ✕ #281415		

Custom colors and name by server ID/class name

✕ +newserver	#ed7526
+newalname	

Performance data and adhoc queries

- ZMON reports

- Over 185 reports
- Hover report for description
- Symbols across the top
 - Drill down available – single click on a line, click again to close
 - Title with host name – click and hold to move
 - Download report – PDF, text or CSV
 - Pause or resume
 - Change time range, node, user, class, etc – adhoc reports
 - Report fields help
 - Fully minimize
 - Minimize or maximize
 - Close report

Time	UserID /Class	<Processor> <-use CPU%> Total	<-----Main Storage-----> <Resident-> Virt	Lock	<-WSSi Actv	-ed Total
12:22:00	System:	22.62	20.57	3284K	3265K	7367 3279K
12:22:00	*TheUsrs	9.38	8.90	601K	601K	126 603K

- ZMON reports

- Refresh every minute
- Sort on columns

Time	UserID /Class	<-use CPU%> Total	<-Resident-> Virt	Total	Actv	Lock	<-WSSi: -ed Total
12:22:00	System:	22.62	20.57	3284K	3265K	7367	3279K
12:22:00	*TheUsrs	9.38	8.90	601K	601K	126	603K

- Primary, secondary, tertiary – last selected column primary
 - First click ascending, then descending
 - Click anywhere else in heading to revert to default sort

- Thresholds

- Set in MONPROF COPY – defaults in ESAMONDF COPY

```

alert.ESAMAIN      = 'ON'
alert.ESAMAIN.8    = '> 80 RED REVVIDEO 80*NCPUS'
alert.ESAMAIN.17   = '> 25 RED REVVIDEO'
alert.ESAMAIN.20   = '> 95 YELLOW REVVIDEO'

```

- zALERT

- Click thru on alert to report, graph or view

- zOPERATOR

- zTUNE

- Graphs

- Over 113 graphs
- Symbols across the top
 - Drill down available – last interval get last 30 minutes of data
 - Title with host name – click and hold to move
 - Download graph – PDF, PNG or JPG
 - Hide or show legend
 - Pause or resume
 - Change time range, node, user, class, etc – adhoc reports
 - Preferences
 - Fully minimize
 - Minimize or maximize
 - Close report

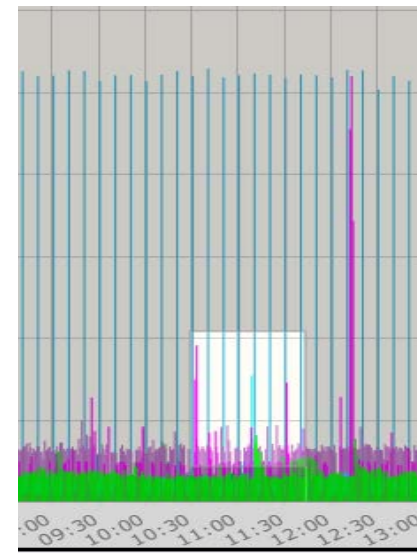
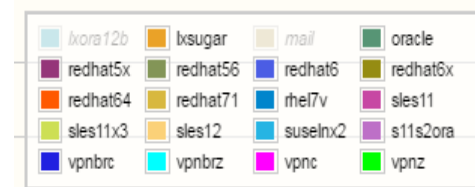
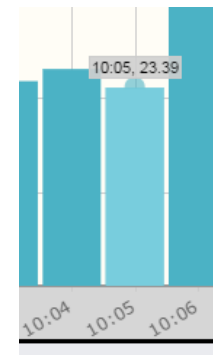


- Graphs
 - Preferences
 - Change graph
 - Vertical and horizontal bar and stacked bar
 - Area and stacked area
 - Line
 - Table
 - Pie and pie percentage
 - Only shows options available for the data
 - Adjust parms – same as pencil
 - Adjust y axis – change scale
 - Help – general zVIEW help
 - About – graph name and zVIEW version

- Graphs
 - Preferences
 - Thresholds
 - Threshold and warning values and bars
 - Refresh clear
 - Clear title and tab colors when data refreshed
 - Relative CPU
 - Enter values between 0 and 100%
 - Thresholds adjusted based on the number of processors
 - Good to use if varying processors on and off
 - Rescale axis
 - Single click in y axis area to scale to present data
 - Good to view small values

- Graphs

- Hover interval to show data values
- Turning off data series
 - Click on name in legend to turn off/on
 - Not for stacked graphs or inconsistent data
 - Turn off high series to rescale Y axis
- Zoom
 - Blow up area to see values or drill down
 - Right click, hold and drag area to zoom
 - Multiple zooms allowed
 - Double click to return to original graph
 - Pause graph first as refresh will unzoom



- Tabs

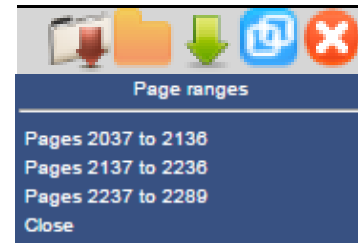
- Organize by server, LPAR, etc
- Views will load in new tab
- Symbols on tab



- Graph or report title in focus or view name and host name
- General zVIEW help
- Window list – bring hidden windows into focus
- Tab parameters
 - All existing and new graphs or reports will use parameters that are set
 - Good for looking at a specific time frame and/or server
- Pause or resume all graphs and reports in the tab
- Close tab and all the graphs and reports in the tab

ZMAP reports

- Read from ZMAP 191 disk – OUT01 file type
- Daily, weekly and monthly
- Number of days kept depends on size of disk
- Select day, week or month for available reports
- Page range selection
 - Number of pages determined by *zMap page group count* parm



Capacity Reports

- Created during nightly ZMAP processing
 - Fast data retrieval and graphing
- Minute, daily, weekly, monthly and trending
 - Trending - Daily, weekly and monthly
- Defined in ZMAP RUNCHART PARMS file
 - Samples provided
 - Some need customization

RUNCHART PARMS Configuration

	Type	Days	Start	Stop	Extract	LPAR, Node or User name
Chart:	MINUTE	1	08:00	17:00	LCPUMIN	nodename
Chart:	MINUTE	1	08:00	17:00	LSTORMN	nodename
Chart:	MINUTE	1	08:00	17:00	LXSWAP	nodename
Chart:	MINUTE	1	08:00	17:00	LBLKIO	nodename
Chart:	DAILY	1	00:00	24:00	LPARCPUS	_____
Chart:	DAILY	1	00:00	24:00	LPARCPUS	lparname
Chart:	DAILY	1	00:00	24:00	UXACT	System:
Chart:	DAILY	1	00:00	24:00	UWAIT	username
Chart:	DAILY	1	00:00	24:00	LSTORE	nodename
Chart:	DAILY	1	00:00	24:00	CLASCPU	_____
Chart:	DAILYT	60	00:00	24:00	LPARCPUM	_____
Chart:	DAILYT	60	00:00	24:00	CLASCPU	_____
Chart:	WEEK	7	00:00	24:00	UXACT	System:
Chart:	WEEK	7	08:00	17:00	LCPU	nodename
Chart:	WEEK	7	08:00	17:00	CLASCPUP	_____
Chart:	WEEK	7	00:00	24:00	LPARCPUS	_____
Chart:	MONTH	31	00:00	24:00	UXACT	System:
Chart:	MONTH	31	*	*	LCPUM	nodename
Chart:	MONTH	31	*	*	LSTOREM	nodename
Chart:	MONTH	31	08:00	17:00	CLASCPUM	_____
Chart:	MONTH	31	00:00	24:00	LPARCPUM	_____
Chart:	MONTHT	24	00:00	24:00	LPARCPUM	_____
Chart:	MONTHT	24	00:00	24:00	CLASCPUM	_____
Chart:	NDAYS	31	*	*	LCPU	nodename
Chart:	NDAYS	31	*	*	LSTORE	nodename
Chart:	NDAYS	35	*	*	UDIO	username
Chart:	NDAYS	35	*	*	USTOR	username
Chart:	NDAYS	35	*	*	UCPU	username
Chart:	NDAYS	35	*	*	LPARCPUS	_____

Capacity graphs

- Specify Type

- MINUTE, DAILY(T), WEEK(T), MONTH(T), NDAY
- T = Trending – Append to existing data
- NDAY = Last n days – history required

- Days

- For trending and NDAY specify number or days, weeks or months

- Start Stop

- Specify time range or *

Capacity graphs

- **EXTRACT**
 - Name of ESAEXTR file
 - Names shown are shipped as samples
 - Documented in zVIEW manual
 - First letter significant
 - C = Class
 - L = Linux
 - P or LP = LPAR
 - U = User

Capacity graphs

- Parm
 - Restrict data to specific class, LPAR, node or user
 - Lowercase values must be commented or specified
 - Extracts with no parm value can be further restricted
 - Graph multiple variables for one class,user,node or LPAR or one value for all classes, users, node or LPAR

Capacity graphs

- Graph customization – ESAEXTR TITLE stmts
 - Variables specified in title
 - Start/end date and time and userid
 - Graph type
 - Nnames for variables in legend
- Manually run on ZMAP
 - Test new capacity graphs
 - Catch up on old data
- **Make sure to LOG OFF ZMAP when finished!**

Capacity graphs

- RUNAUTO PARMs – CHARTCNT
 - CHARTCNT 6 8 7 3 1
 - Number of monthly, weekly, daily, minute and ndays graphs to keep
- RUNAUTO PARMs – ADISKBLKS
 - Number of disk blocks to free before starting ZMAP run
 - Minimum 10,000
 - 15,000 if creating lots of capacity graphs
- Complete documentation in zVIEW manual

Views

- Save and reload commonly used graphs and reports
- Create system or personalized start-up view
- Save/load views
 - System – CONFIG disk – must be signed onto Portal
 - Cookie – Limited to max size of cookie ~4k
 - PC – Can't use for start-up
- Parameters and other customization saved with view

Views

- **Tab parms**
 - Change graphs and reports for particular user or node
 - Relative option for capacity graphs
 - Depending on graph type can set for:
 - Yesterday
 - Last business day
 - Last week
 - Last month
- **Load view host selection**
 - Check box to use current host or use host saved
- **Load or Save view to remove personal start-up**

- Direct URL access
 - Can save as bookmark
 - URL for report graph or view
 - <http://myhost.com/zview/zview.cgi?screen=esamain>
 - <http://myhost.com/zview/zview.cgi?graph=cpuutil>
 - <http://myhost.com/zview/zview.cgi?view=linux>
 - Menu options
 - &menu=open – Open floating menu
 - &menu=closed – Closed floating menu
 - &menu=fixed – Fixed menu on left

- Direct URL access
 - Other qualifiers
 - &sdate - Start date (yy/mm/dd)
 - &stime - Start time (hh:mm)
 - &edate - End date
 - &etime - End time
 - &node - Node name
 - &user - User name
 - &class - Class name
 - &lpar - LPAR name
 - &device - device number

Questions ?