

# Connecting to the zPRO Demo System

## Introduction

Velocity Software provides an explorative cloud platform (demo system) to allow interested parties the ability to exercise many of the zPRO features without having to install the product in-house. This system can also be utilized for the purpose of provisioning systems for individuals interested in learning more about z/VM, Linux, CMS, etc, in a self-study environment.

The following describes the steps needed to establish connectivity to the zPRO demo system. It covers connectivity to:

- zPRO via a browser
- z/VM second level or CMS guests via x3270 or TN3270
- Linux guests via putty

## Connecting to zPRO via a browser


To access the Velocity Software cloud, click on <https://demo.velocitysoftware.com/zpro/>.

The process flow is:

- a. Log into the zPRO main system.
- b. Create a personal zPRO User ID to be able to use the cloud system.
- c. Create/Manage CMS User IDs, second level z/VM systems and/or Linux servers.
- d. Use the created systems for self-study education and leveraging the ease of use of zPRO

Figure 1-1 shows the initial logon screen to access the main zPRO system. Enter the User ID demozpro and password demodemo.

**zPRO Cloud Management**



Userid  
demozpro

Password  
.....

Signin

---


**Welcome to the  
Velocity Software zPRO Demo Site**

**Velocity Software maintains a cloud for demonstration purposes and  
for supporting your education needs.**

If you do not yet have a Demo System userid, login with the userid of **DEMOZPRO**  
and password **DEMODEMO** to create one.

If you need assistance, contact [support@velocitysoftware.com](mailto:support@velocitysoftware.com)

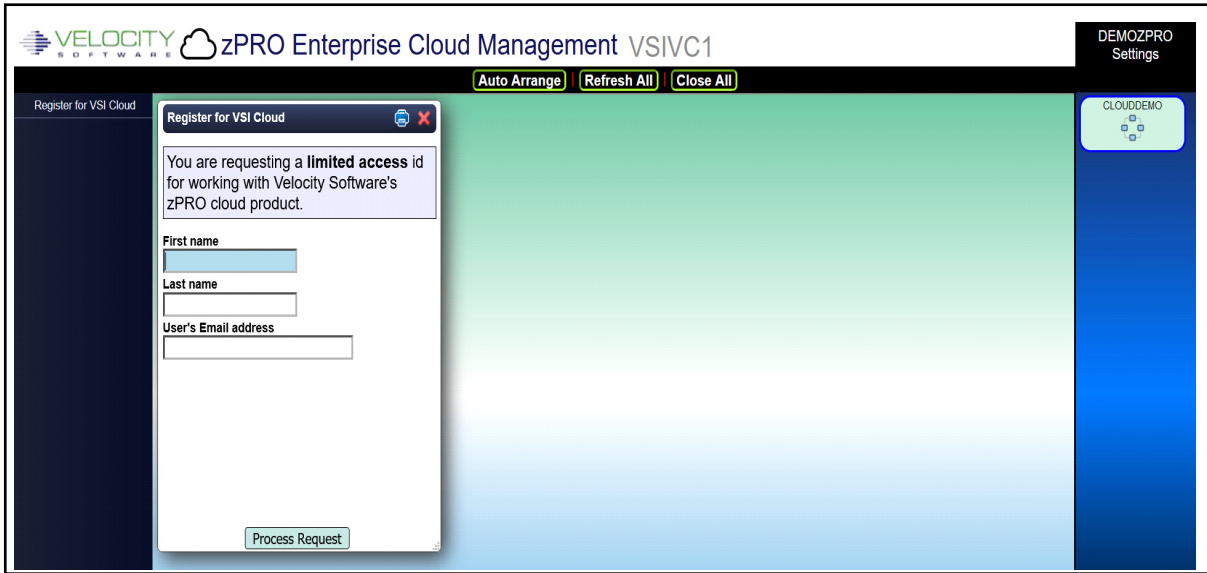
For more details on zPRO, check out the [zPRO product page](#)



Note: All usage of this system is tracked, logged and audited

*Figure 1-1 Initial Logon Panel*

Once signed in as DEMOZPRO, register for a personal/group user ID for the Velocity Software Cloud by entering your name and email address then clicking Process Request as shown in Figure 1-2.



*Figure 1-2 Register for a zPRO User ID*

An email will be sent to the address provided giving the created zPRO user ID and password, as shown in Figure 1-3.

**Note:** If a registration has already been requested with the provided email id, a message will show that an ID already exists. To have the password reset, please contact [support@velocitysoftware.com](mailto:support@velocitysoftware.com).

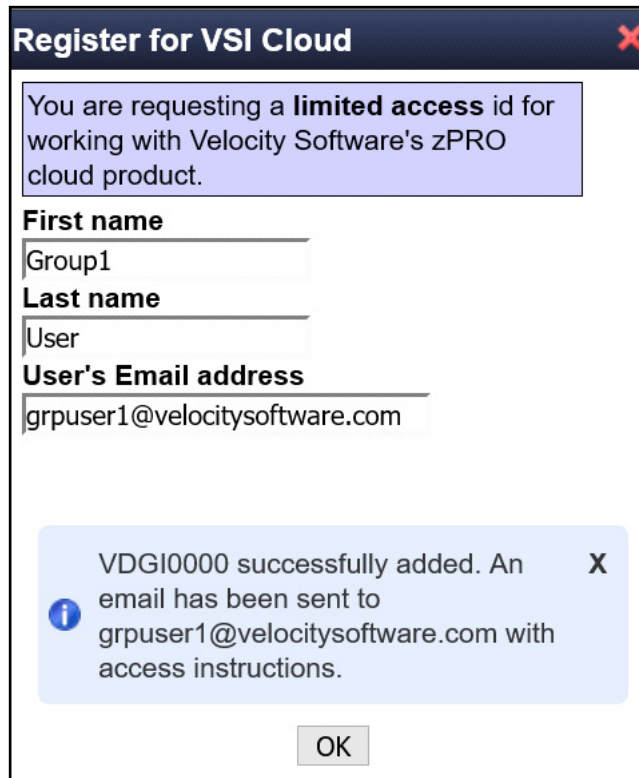


Figure 1-3 Message that the ID has been created

The email will provide a new zPRO user ID and password for use on the demo system as shown in Figure 1-4.

Dear Group1,

A new zPRO ID has been generated on your behalf. You may connect to this userid by:

- Pointing your browser to <https://demo.velocitysoftware.com/zpro/>
- Use userid: VDGI0000
- Use xxxxxxxx as the password. You will be required to change the password before you will be allowed to login.
- **Note** Passwords are limited to eight characters and can contain letters, numbers and the following characters: . < + | & ! \* - % \_ > ? : =

If you have difficulty using this userid, please contact the system administrator at [sysadmin@velocitysoftware.com](mailto:sysadmin@velocitysoftware.com)

Regards,

System Administrator  
Velocity Software, Inc.  
[sysadmin@velocitysoftware.com](mailto:sysadmin@velocitysoftware.com)

Figure 1-4 Sample email for registering for zPRO ID

Go back to <https://demo.velocitysoftware.com/zpro/> (or refresh the current screen). Logon with the provided ID and password as shown in Figure 1-5.

**ZPRO Cloud Management - VSIVM4**

**VELOCITY SOFTWARE**

**Userid**  
VDGI0000

**Password**  
●●●●●●●●●●

Signin

Figure 1-5 Sign in with new zPRO User ID

First, the system will request the password be changed as shown in Figure 1-6.

**VDGI0000 - Change Password**

**Old Password**  
●●●●●●●●

**New Password**  
●●●●●

**Confirm Password**  
●●●●●

Change Password Logout

Figure 1-6 Change password on first logon

When the password change is complete, the message shown in Figure 1-7 will appear. Click OK and the main zPRO menu will be presented as shown in Figure 1-8.

Password successfully changed

OK

Figure 1-7 Message to show that password was changed

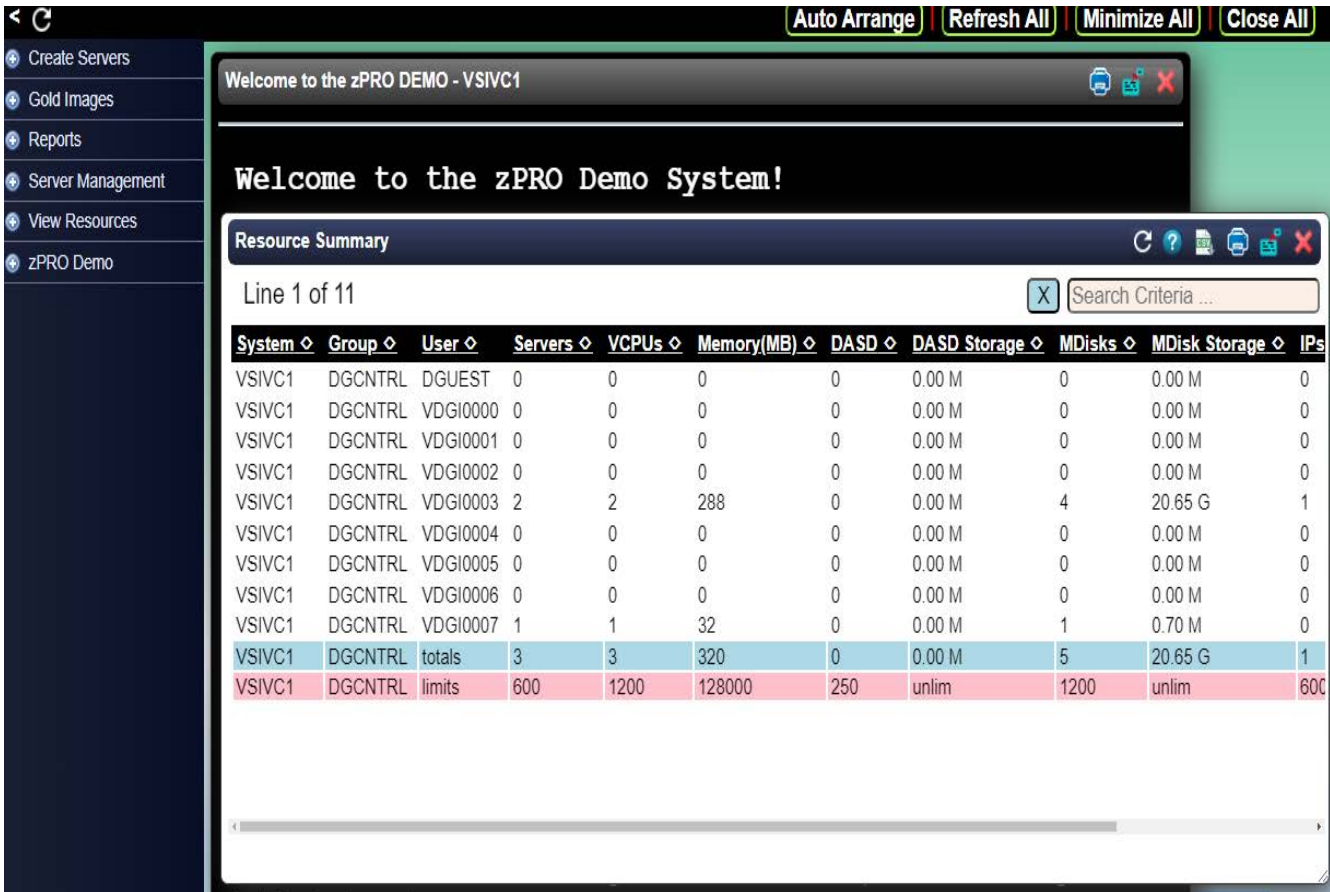


Figure 1-8 Initial zPRO Panel

This panel provides:

- On the left, there will be a list of the available self service functions
- In a pop-up window, there will be a panel showing the resource usage of the resources available to your group. This is informational and can be closed.
- In a pop-up window, there will be a Welcome to the zPRO Demo System page that has list of other zPRO functions. This is informational and can be closed.

There are multiple collections of services provided:

<b>Group</b>	<b>Description</b>
Create Servers	Contains functions that relate to the cloning process or generation of new servers
Gold Images	Contains a function to list the golden system images
Reports	Contains functions to provide information about the use of this system
Server Management	Contains functions to modify the definition or operational characteristics of a server
View Resources	Contains functions related to the management and reporting of zPRO managed resource consumption
zPRO Demo	Contains a list of demonstrable services provided by zPRO

Figure 1-9 shows these groups on the left side panel.



*Figure 1-9 Menu for zPRO End Users*

At the top of the panel there are four functions (Auto Arrange, Refresh All, Minimize All and Close All) that allow for arranging (vertically), refreshing, minimizing or closing any open panels. These options may be useful once multiple panels have been opened.

The pull-down expansion of each of these groups is shown in Figure 1-10. These are updated periodically and may show slight differences than what is shown.

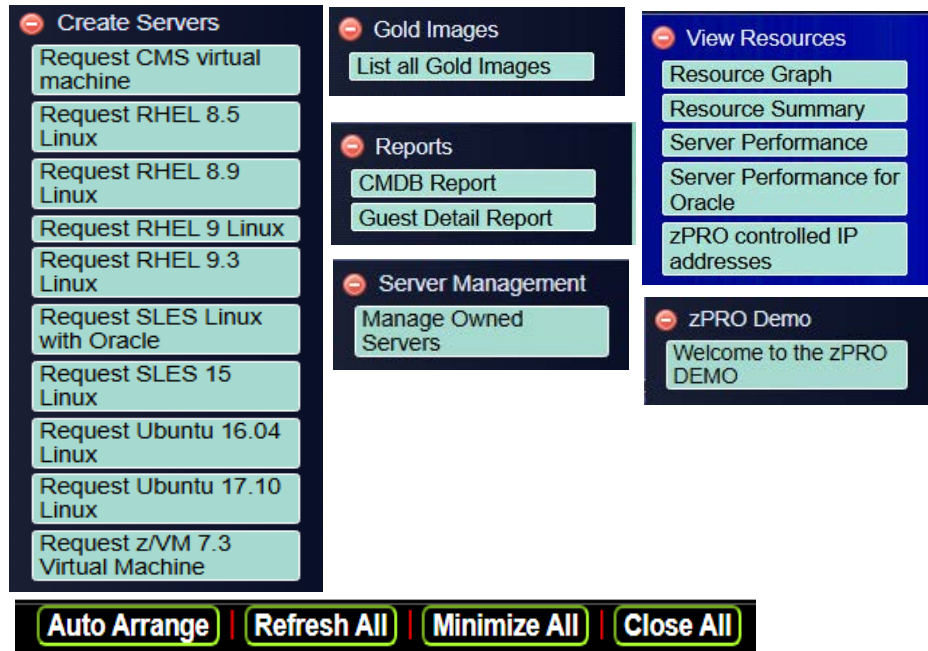


Figure 1-10 Functions that could be used by End-user and zPRO Administrator

The Servers listed above are subject to change - this is only an example.

**Note:** There are also several options available under the Settings Heading Pull Down on the top right side as shown in Figure 1-11.

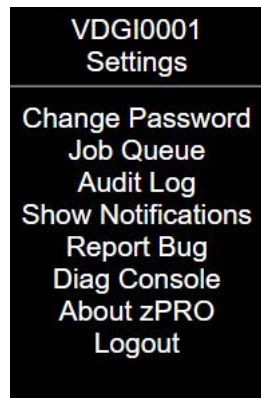


Figure 1-11 Setting options

**Note:** zPRO will automatically log out after 15 minutes of non use. A warning will be given at 14 minutes.



## User IDs and Golden Images

There are multiple User IDs (with separate passwords) that can be used in this environment. For clarification, they are listed below:

- a. The initial zPRO User ID of DEMOZPRO. This is the first access into the Velocity environment that is used to request a personal zPRO User ID.
- a. The requested zPRO User ID to logon in to zPRO for creating servers and other functions.
- b. Optionally a created CMS server ID. This will be sent in an email and used with a 3270 emulator.
- c. Optionally a 2nd level z/VM server ID. This will also be sent in an email and used with a 3270 emulator.
- d. Optionally a created Linux server ID. This ID will be assigned a port number to use with an SSL connection. A Linux server does not use a 3270 emulator but is accessed through an SSL connection like Putty. The IP address for the SSL connection and root password are provided in an email. The Host name is *zcloud.velocitysoftware.com*.

The zPRO user functions available:

- Request a z/VM CMS user id
- Request a Linux server
- Request a 2nd Level VM guest
- Start/Stop a server
- Delete a server
- Change a server's password
- Display resource graph
- Display resource usage
- Display IP addresses
- Display server performance data (zVIEW)
- View the Audit Log

## Access to z/VM for CMS or 2nd level VM system

A 3270 emulator must be installed to access the z/VM system. This section describes how to connect using x3270 or TN3270. This step should be done before requesting a server.

### Setting up a Windows PC with an x3270 (wc3270) Emulator

The first emulator is x3270 which is a freeware/open source program available at

<https://sourceforge.net/projects/x3270/>

Download the file and then execute it (the file name may be a later version).

wc3270-4.3ga9-setup.exe

Follow the installation wizard steps using the defaults. Then use these steps to create a session:

- Choose option 1

Enter session name e g. DEMO

- Enter hostname as: demo.velocitysoftware.com

On the Options list:

- Choose 3. TCP Port

Enter 992

- Choose 10. SSL Tunnel

Enter Y

- Tap enter to complete options setup
- Create Sessions – Enter Y
- Create Shortcut – Enter Y
- Enter 9 (quit)

This will complete the installation of the emulator. Then,

- Double click (or execute) on the shortcut that was just created.

There should now be a logon screen as shown in Figure 1-12.

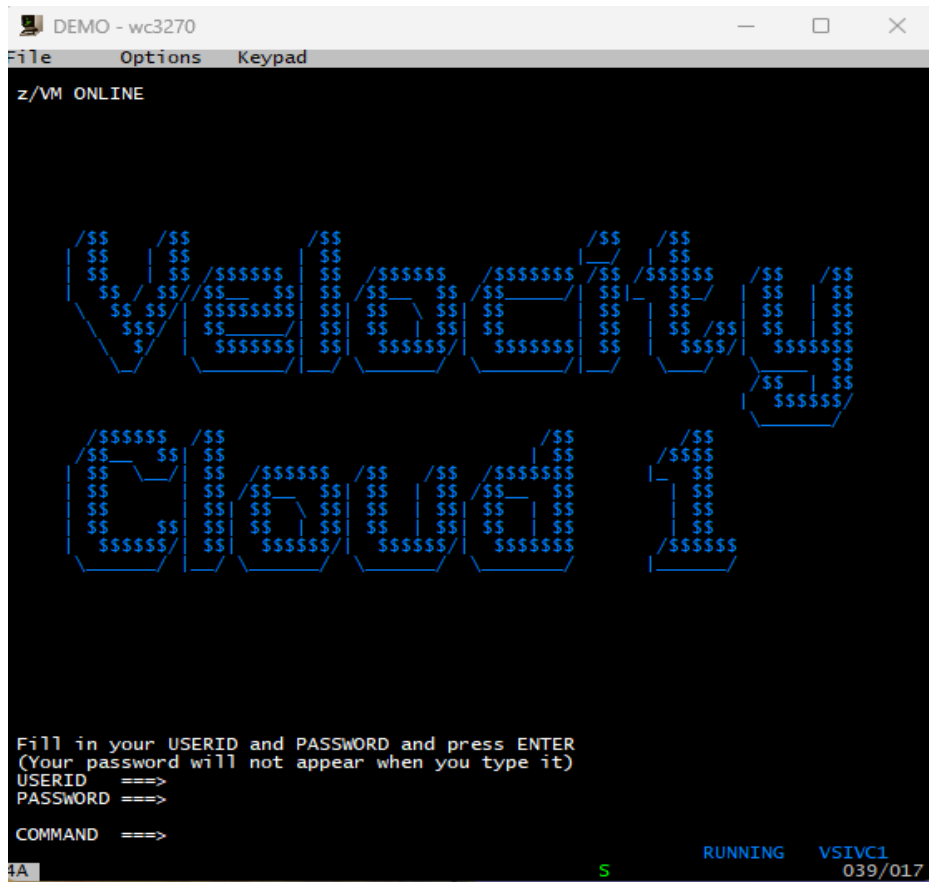


Figure 1-12 3270 Logon screen

Now a CMS User ID or z/VM second level system can be created. Go to section “Requesting a CMS or z/VM Second Level Server on zPRO” on page 1-12.

## Using TN3270 as the Emulator

This is a usually chargeable product available from several sources. We use the VISTA TN3270 from <http://www.tombrennansoftware.com/>.

When setting up a TN3270 session, as shown in Figure 1-13, use the following:

- Host IP Name: demo.velocitysoftware.com
- IP Port: 992
- SSL/TLS: TLS V1.2

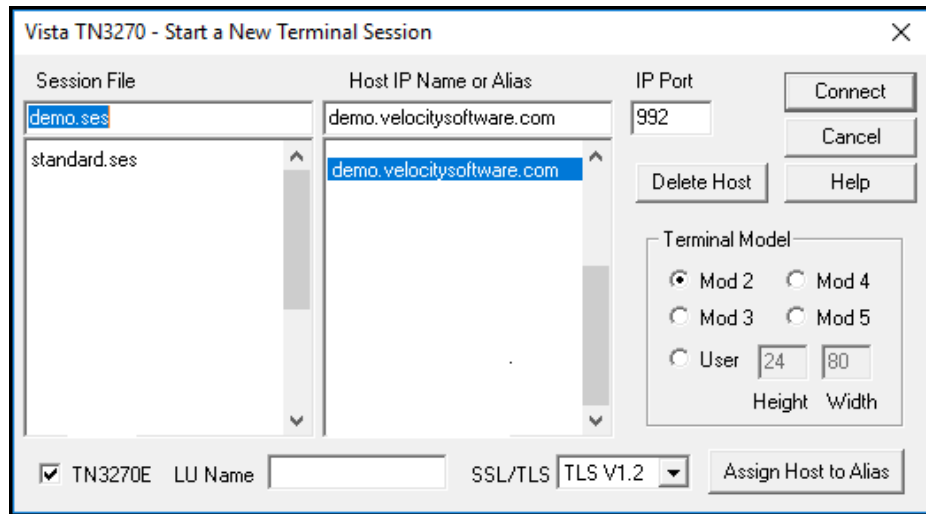


Figure 1-13 TN3270 new session panel

This will bring up the screen shown in Figure 1-14.

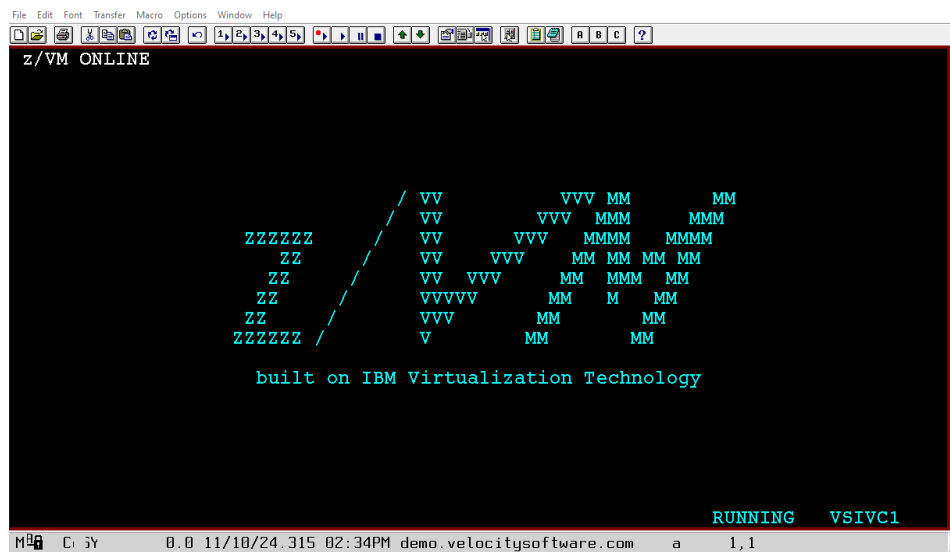
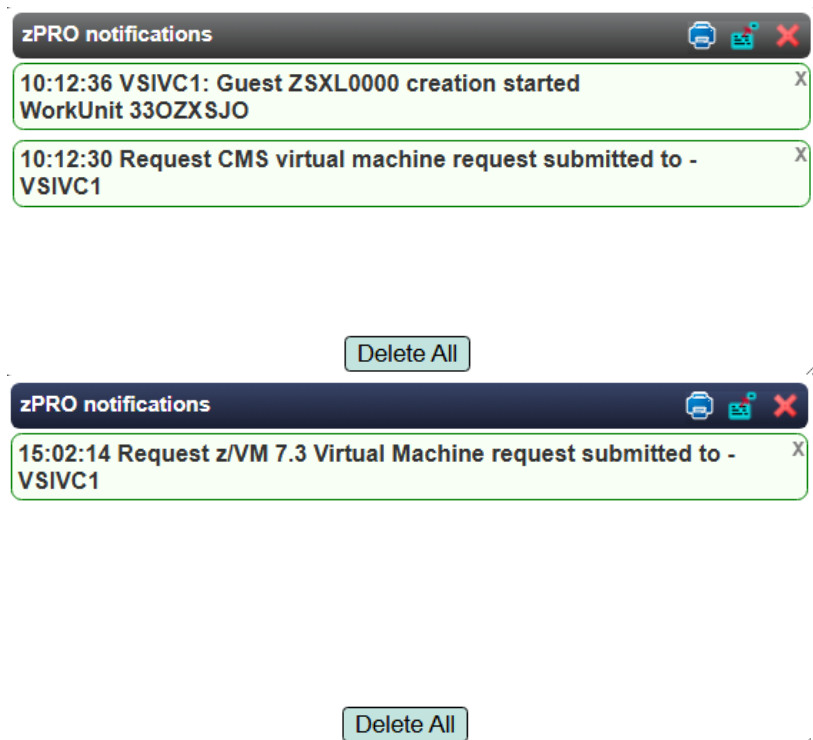


Figure 1-14 Vista TN3270 Emulator

Continue with Requesting a CMS Server on zPRO in the following section.

## Requesting a CMS or z/VM Second Level Server on zPRO

On zPRO, click on Create Servers. Click on either Request CMS virtual machine or Request z/VM x.x virtual machine. On either, click Process Request and an email will be sent with the necessary information. A notification will appear in the bottom right corner as shown below.



*Figure 1-15 zPRO notification of create a CMS server or z/VM second level system*

## Sample of email for CMS Server

This is a sample of the email that will be received when creating a CMS server.

A new CMS user-id has been generated on your behalf. You may connect to this id by

- Using a TN3270 monitor emulator. A free 3270 emulator can be downloaded at <https://sourceforge.net/projects/x3270/>

You will also need OpenSSL for a secure connection:  
<https://slproweb.com/products/Win32OpenSSL.html>  
and look for the latest version of Win64 OpenSSL Light

NOTE: Some TN3270 emulators have OpenSSL built-in. Check your TN3270 software before downloading and installing OpenSSL.

- Point your emulator to DEMO.VELOCITYSOFTWARE.COM. You will need to configure the port number, use port 992, and select SSL TLS V1.2.

- Use an ID of ZSXL0000

- Use xxxxxxxx as the password. You will be required to change the password before you will be allowed to login.

If you have difficulty using this user-id, please contact our system administrator at [sysadmin@velocitysoftware.com](mailto:sysadmin@velocitysoftware.com)

Regards,

System Administrator  
Velocity Software, Inc.  
[sysadmin@velocitysoftware.com](mailto:sysadmin@velocitysoftware.com)

*Figure 1-16 Sample of email received when a CMS Server is created*

## Navigating z/VM in a 3270 Environment

Use the CMS or z/VM 2nd level user ID and password to log onto the system. Enter the following at the bottom of the screen:

logon xxxxxxxx where xxxxxxxx is the user ID

Once logged on, it is important to become familiar with the special keys used by CMS and z/VM.

For x3270, go to the top of the x3270 emulator screen and click on Keypad. This will bring up the screen shown in Figure 1-17.

For TN3270, the special keys needed for z/VM and CMS are on the top of the TN3270 emulator screen. Click on Show Keypad (7th box from the right) and a keypad will pop up as shown in Figure 1-18.

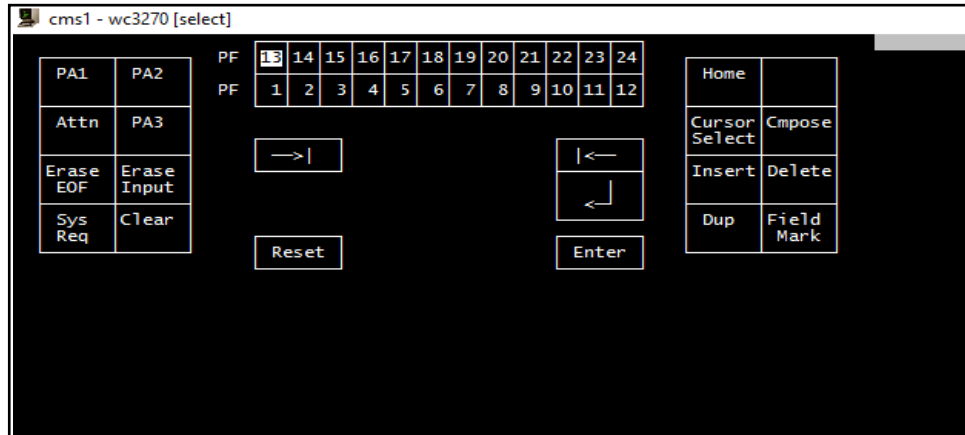


Figure 1-17 Keypad for x3270 emulator

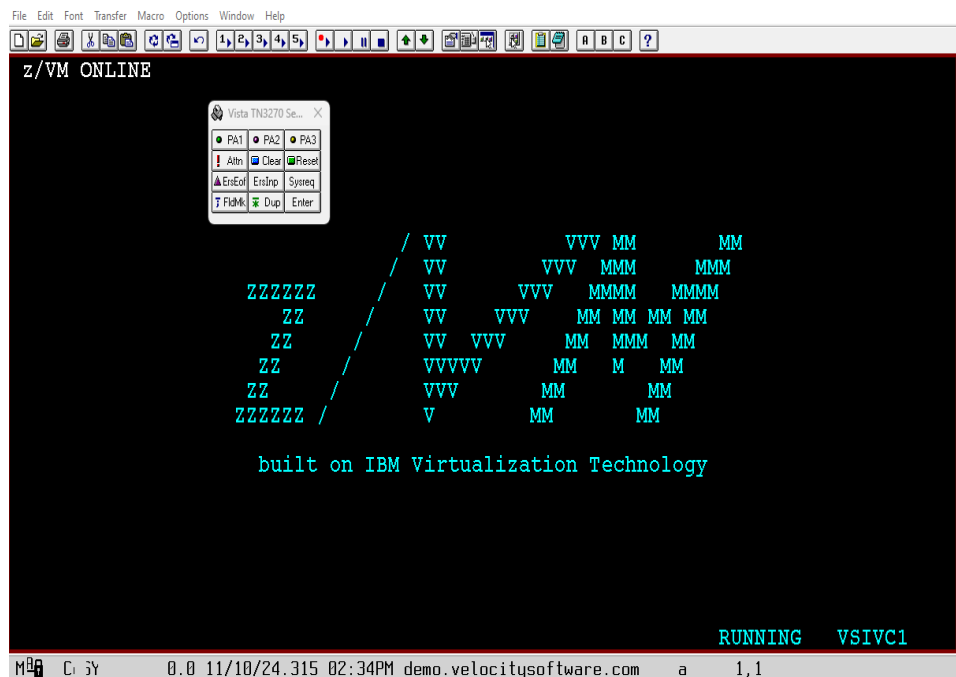


Figure 1-18 Keypad for TN3270 emulator

There are 2 keys that will be used often as well as the program function keys.

The Clear key is necessary for clearing CMS and CP messages. The CLEAR key will be used if the screen fills up and HOLDING or MORE is displayed at the bottom right. Click on the CLEAR key to get to the next page. The clear key can also be used to clear any data that is on the screen, which is especially useful when knowing a command will have a large display.

The Reset key is for solving keyboard problems that can arise. If typing in an area of the screen that is protected, some form of an "X" will show up at the bottom of the screen indicating that the keyboard is locked. The RESET key will clear this.

**Note:** The key used for 'enter' is the Ctrl key, not the Enter key on most keyboards. The Enter key is the 'new line' key used to skip to the next line.

Important things to be aware of when logging onto a z/VM system:

- The system will be prompt to change the initial password for the first logon.
- After updating the password, the screen will show VM read at the bottom right, hit enter and the existing profile file will be executed. The bottom right will now show RUNNING and the upper right will show Ready; with the current system time. The system is now ready to execute commands.
- When working on CMS, when MORE... is displayed at the bottom right of the screen, it means there is more data available. If nothing is done, the screen will clear in a set period of time (default is one minute). If wanting to continue before that, the clear key must be used. When HOLDING is displayed at the bottom right, it means there is more available data, but the screen will not automatically clear. The clear key must be used to get the next available data.
- If connectivity is lost and the system is actually disconnected (not logged off), the message User ID xxxxxxxx is already connected to GRAF xxxx will appear. In this case, enter the command below to get reconnected. (Note: if sharing this ID, the other person will immediately be disconnected, so use carefully.)

LOGON xxxxxxxx here

- If the system does get disconnected, when it is reaccessed the it will show CP READ the bottom right. This means it is in CP mode. To get back into the CMS environment, enter B for Begin and the system will return to where it was when it was disconnected.

## Accessing a Linux system

SSL and a terminal emulator must be installed to access a Linux system. If these are already installed, skip to "Requesting a Linux Server on zPRO" on page 1-17.

### Setting up a Windows PC with OpenSSL for use with Linux

Install OpenSSL. Download and execute OpenSSL for Windows for secure (SSL) connections. Take all the installation defaults.

<https://openssl-library.org/source/>

Once OpenSSL is configured, use a product such as Putty or Kitty to access the system. To get a system, use the following.

### Setting up a Windows PC with Putty/Kitty for use with Linux

Go to <https://www.foosshub.com/KiTTY.html>

Find the 'KiTTY Windows classic' and click to download

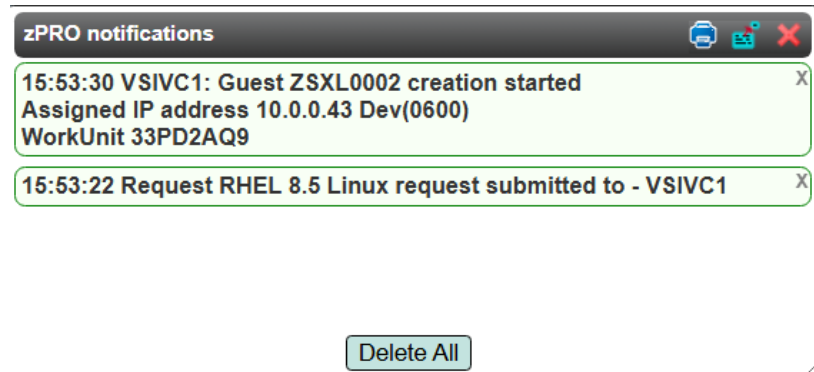
Use the downloaded file to install KiTTY



Open the KITTY application and configure it as desired. This can now be used to access a generated Linux system.

## Requesting a Linux Server on zPRO

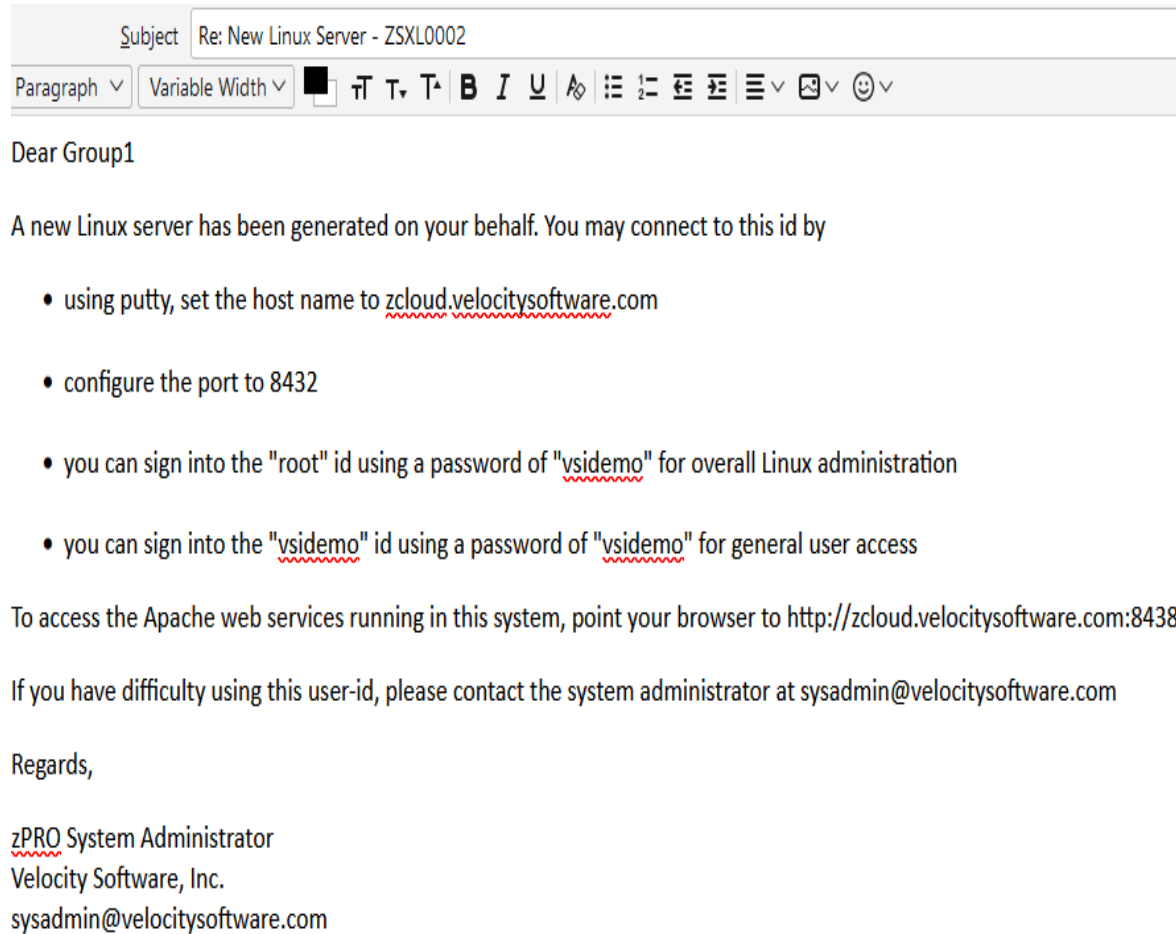
On [demo.velocitysoftware.com/zpro/](http://demo.velocitysoftware.com/zpro/) click on Create Servers. Click on whichever Linux system desired. Click Process Request and an email will be sent with the necessary information. A notification will appear in the bottom right corner as shown below.



*Figure 1-19 zPRO notification of create a Linux server*

## Sample of email for Linux Server

This is a sample of the email that will be received when creating a Linux server.



*Figure 1-20 Sample of email received when a Linux Server is created*

---

**Velocity Software, Inc.**  
zVPS Product Manager  
PO Box 390640  
Mountain View, CA 94039-0640

TEL: (650) 964-8867  
FAX: (650) 964-9012

**Velocity Software Contact Information:**

SUPPORT@VelocitySoftware.com

Copyright 2020 Velocity Software, Inc. All Rights Reserved.

ESAMAP, ESAMON, ESAWRITE, ESAWEB, ESATCP, ESALPS, zALERT, zMON, zMAP, zOPERATOR, zPRO, zTCP, zTUNE, zVIEW, zVPS, zVWS and zWRITE, are trademarks of Velocity Software, Inc.

All other products and/or company names are trademarks or registered trademarks of their respective owners.

